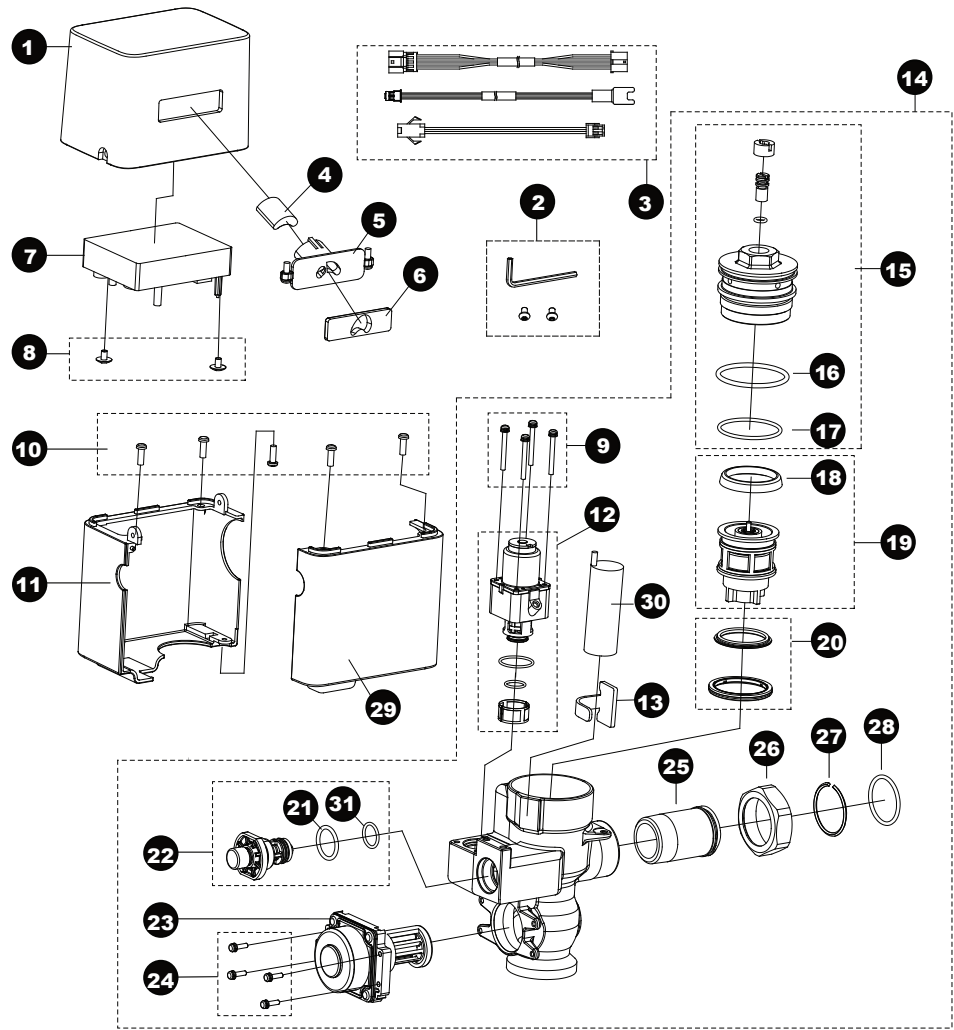




BEST PLUMBING SPECIALTIES

TET1UA Series

EcoPower® Flush Valve,
Toilet, Exposed, 1.0 Gpf



Item	Part	Description	Item	Part	Description
1	99881332	Cover, top	16	99822390	O-ring, valve cap top (10/bag)
2	99881335	Screw w/wrench set, exposed	17	47105	O-ring, valve cap botm (10/bag)
3	99881336	Extension harness (3 type/bag)	18	47107	U-packing, piston (10/bag)
4	99881337	Sensor unit	19	99340341	Piston assembly
5	99881338	Bracket, sensor w/screw (15D)	20	47103	Seat packing set
6	99881339	Glass, sensor window, exposed	21	99122240	O-ring, screen nut (10/bag)
7	99671677	Controller unit, E	22	99287444	Push button assembly
8	99881340	Screw, controller mount (2/bag)	23	99287746	EcoPower generator, toilet
9	99822386	Screw (4/bag)	24	99287745	Screw, EcoPower generator
10	99822379	Screw, cover, valve (5/bag)	25	47110	Tailpiece
11	99881334	Cover, lower, B	26	47106	Nut, tailpiece/angle stop
12	99822387	Solenoid unit & diaphragm assy	27	47109	Locking ring set, tailpiece (10/bag)
13	99287429	Clamp set (10/bag)	28	47101	O-ring, tailpiece (10/bag)
14	NLA	Valve bodyassy, exposed, toilet	29	99881333	Cover, lower, A
	NLA	Valve bodyassy, exposed, toilet for Re	30	99065714	Back-up battery
15	99822388	Valve cap assembly	31	99783059	O-ring (1/bag)
	NLA	Valve cap assembly for Reclaimed Wa			

Vacuum Breaker Sets
99287426 Top Spud, 1-1/2" Outlet, Exposed
99671678 Top Spud, 1-1/2" Outlet, Exposed for Reclaimed Water
Note: For additional information, refer to the individual vacuum breaker parts sheets.

TROUBLESHOOTING

Problem	Possible Cause	Suggested Action	Ref.Page
No water comes from the Flush Valve	The main valve in water supply line or the control stop is shut off	Open the main valve or the control stop	-
	One or more cables not connected	Check all cable connections	-
	The surface of the glass in front of the infrared sensor is dirty	Clean the surface of the glass	-
	The glass is broken	Contact distributor for replacement	-
	There is a reflective surface in front of the sensor	Remove the reflective surface in front of sensor	15
	The infrared sensor or the solenoid is out of order	Contact distributor for replacement	-
	The small holes in the solenoid diaphragm are clogged	Clean the small hole in the diaphragm and filter	14
Water does not stop flowing	Hydropower generator is clogged	Service hydropower generator	-
	The small hole in the piston is clogged (not for TEU1UA(R)(X))	Clean the small hole in the piston	13
	The sealing area of the piston is dirty (not for TEU1UA(R)(X))	Clean the sealing area of the piston	13
	The sealing area of the solenoid diaphragm is dirty	Clean the sealing area of the diaphragm and filter	14
The discharge volume is too small	Piston u-packing is damaged (not for TEU1UA(R)(X))	Inspect & replace if necessary	13
	The screw of the control stop is not adjusted properly	Adjust the discharge quantity by the screw of the control stop	14
The discharge volume is too much			
The flow rate is too low	Water supply pressure is too low (below rated minimum pressure)	Consult with a plumbing contractor	-
	The control stop is not open enough	Adjust the control stop properly	14
The flow rate is too high	The control stop is not adjusted properly	Adjust the control stop properly	14
A red light in the sensor window blinks	The battery is weak	Check voltage with multimeter, if below 2.6 V, contact TOTO for replacement battery.	14
NOTE: Do not dismantle parts of the Flush Valve which are not specified in the troubleshooting guide. If you need further assistance, please call TOTO Technical Support at (888) 295-8134.			